

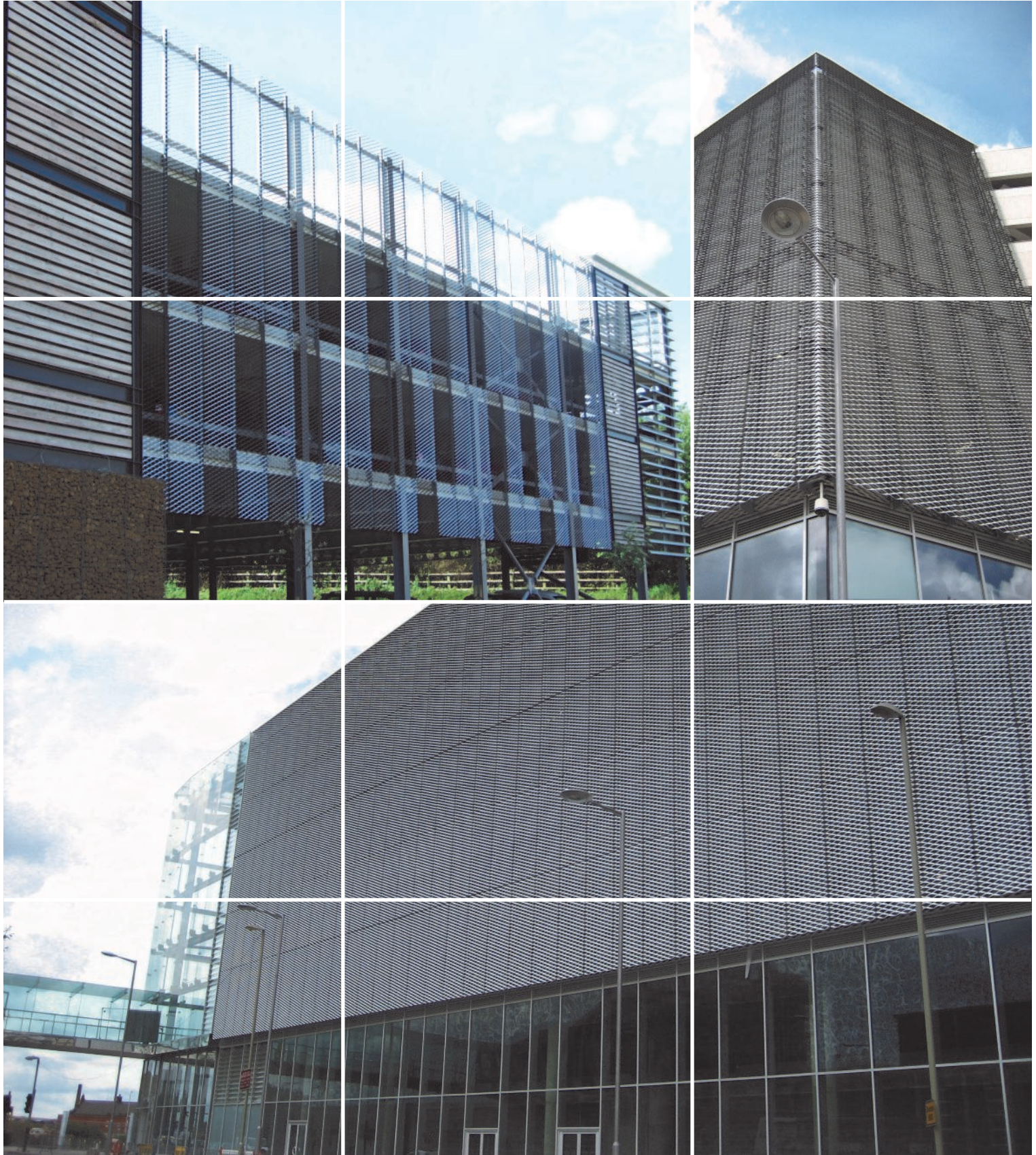
Building on a reputation...



IRVINE-WHITLOCK

Aluminium Mesh

INTEGRATED-WALLING



Aluminium Mesh

INTEGRATED-WALLING

Overview

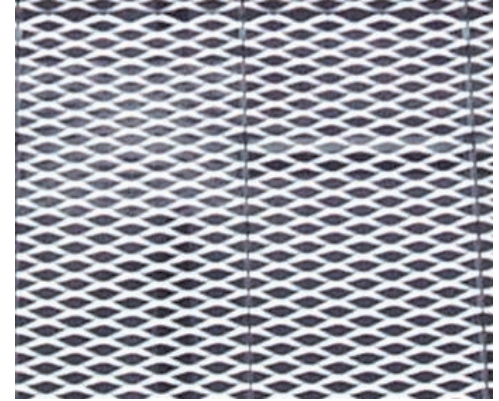
I-W have recently commenced installing a new cladding system, in close partnership with James & Taylor, which has rapidly become a very successful part of our portfolio.

Called the Eyetech system, I-W work closely with James & Taylor on each project to design, manufacture and install a custom made architectural mesh façade solution.

Eyetech systems provide extremely high levels of durability, are lightweight and feature a high quality anodised finish. Eyetech comes fully tested and certified for airflow, the manufacturing process makes efficient use of raw materials and the product is fully recyclable.



I-W are the leading installers of the Eyetech system. Our dedicated team of fully trained, experienced installers have successfully completed projects with various mesh designs totalling over 20,000 m², including multi story car parks, sub stations and a conference centre.



Projects

- St David's, Cardiff
- Highcross, Leicester
- Loughborough University
- Milton Keynes Hospital
- Stratford City, London

Featured Project - Highcross Leicester



I-W secured their first major Eyetech contract in 2008, the Highcross shopping centre in Leicester, worth £2.1m. The project involved covering 6000m² of façade, an extreme challenge as a large part of this was a double skin mesh system incorporating galvanised posts.

Even with over 100 sheet types, 50 windpost types, 40 different bracket arrangements and some difficult access arrangements to contend with the I-W team still managed to complete the project on time and within budget.

The aluminium perforated system installed at low level also proved interesting, however our involvement led to the development of the aluminium windpost which now forms an integral part of the Eyetech system available today.

Specialists in walling solutions

Aluminium Mesh
Brickwork
Blockwork

Glass Blockwork
Precast Panels
Prefabricated Masonry

Rainscreens
Render
Steel Framed Systems

Stone Masonry
Timber Cladding
Thin Joint Technology