

Earls Barton

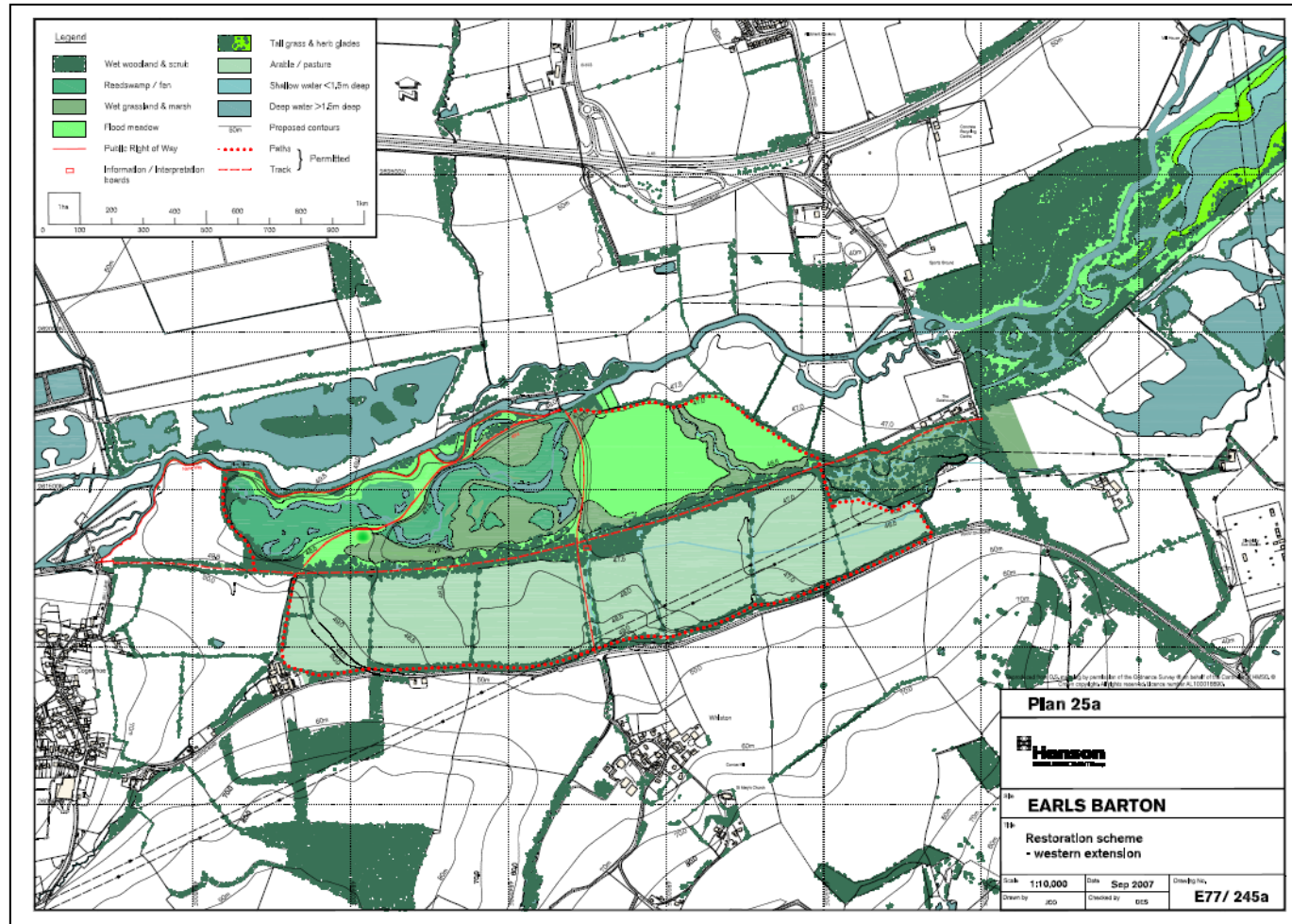
Site Biodiversity Action Plan



Site Information- Earls Barton

Site Name and Location (incl. Grid Ref.)	Earls Barton ,Northants (SP859617)
Hanson Company	HANSON AGGREGATES – CENTRAL
BAP(s) that will be targeted	National BAP Northants LBAP
Habitat(s) to be developed	Rivers, Reedbeds, Wet Woodland and Floodmeadow.
BAP species to be encouraged	Water Vole; Otter; Barn Owl.
Designated Natural Area	Nene Valley and Valley Rises.
Background and site description	E. Barton Quarry extends to just over the floodplain and terraces of the River Nene, just south of Northampton. The site comprises a range of restored land uses including woodland and extensive floodplain farmland which is still in the process of being restored.
National Designations (SSSI, SAC, SPAs, RAMSARs and NPs) within 500m	RAMSAR site – Upper Nene Valley SSSI – Upper Nene Valley Gravel Pits –Ref: 1082789 http://www.sssi.naturalengland.org.uk/special/sssi/sssi_details.cfm?sssi_id=2000494
Resource Requirements-comment on cost if appropriate	Regular contact with NE . Pre-strip ecological surveys are a requirement of planning conditions. Protection of existing habitats is a legal requirement.
Contribution to biodiversity	Increasing the areas of reedbeds and wet woodlands are national habitat priorities. The restoration of the entire wetland complex will create a large nature reserve capable of supporting significant populations of non-target species and of BAP priority species including Water Vole and Otter. Barn Owl boxes have been erected around the site previously and will be replaced/repared as necessary to ensure they continue to provide nesting sites for local target species.
Partners and Local initiatives	NE,N,B&B. Wildlife Trust.
Other documents supporting the site BAP	Environmental Statement.

Site Layout



Action Plan

Item No.	Objective	Biodiversity Feature	Targets	Tasks	Assessing Indicator	Responsible Person	Timescale (Completion)
1	Restore important habitats.	Wetland mosaic	c.300 ha of floodplain restored to a mosaic of open water, channels, ponds, reedswamp, fen, wet woodland, wet grassland.	In compliance with approved restoration scheme, progressively restore site utilising planting and natural regeneration, as appropriate.	Successful completion of all restoration works in accordance with approved scheme.	Landscape Architect.	5 years.
2	Restore important habitats.	Reedswamp within wet woodland	20 hectares new reedbed.	Create silt lagoon landform capable of supporting reed development and inoculate with reeds either by planting or other approved means .	Area (ha) reed shelf created and successful take of reed plants.	Landscape architect.	
3	Consult with BAP partner organisations.	Site restoration.	Maintain regular contact with EA.	Continue restoration design for biodiversity combined with Bird –strike and flood alleviation	Show results to partners	Landscape Architect.	once per year for life of site (5 years).
4	Encourage rare species.	Water Vole, Otter.	Species noted on site.	Restoration of site as per target 1. Consideration given to utilisation of materials (e.g. tree felling arisings) to create habitat opportunities.	Sightings of species by site staff, consultant ecologist or third parties (e.g. bird club members, DWT mammal surveys).	Landscape Architect, Site Manager.	Annual report for life of site (5 years).
5	Protect species.	Barn Owl.	Maintain existing owl boxes.	Monitor condition of owl boxes and repair/replace as appropriate.	Owl boxes monitored annually.	Site Manager.	