

Gelligaer Quarry

Site Biodiversity Action Plan



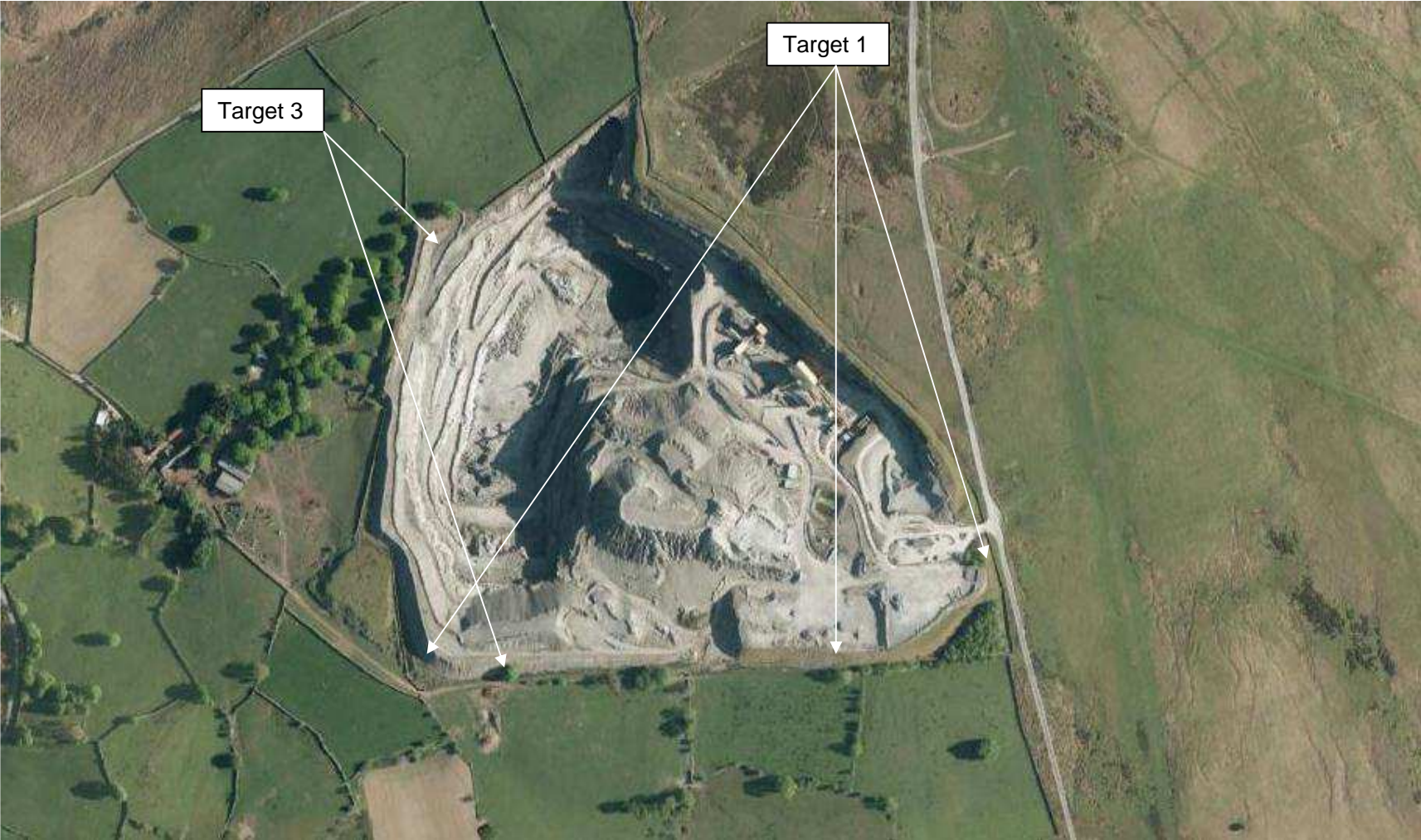
Prepared: December 2012

**Updated: August 2013
June 2017**

Site Information- Gelligaer Quarry

Site Name and Location (incl. Grid ref.)	Gelligaer Quarry Grid Ref. ST 11803 99487 (site entrance)
Hanson Company	Hanson Aggregates
BAP(s) that will be targeted	UK BAP Wales BAP Merthyr Tydfil BAP Biodiversity Action Plan for Caerphilly
BAP Habitat(s) to be developed	Wood pasture and parkland Upland heathland Oligotrophic lakes Dry stone walls Rock outcrop and scree habitats Open mosaic habitats on previously developed land
BAP species to be encouraged	Bat species Slow worm, adder, grass snake, common lizard Peregrine falcon, raven Newt species, frogs, toads Butterfly and moth species
Designated Natural Area	None
Background and site description	Gelligaer Quarry is a pennant sandstone quarry situated within the county borough of Merthyr Tydfil. The quarry is situated adjacent to common land to the East which is used for sheep pasture that is characterised by upland acid grassland with heathland and bracken. The quarry is bordered on the West/ South by semi-improved agricultural pasture that is defined by dry stone walls with isolated trees and scrub patches. The site requires a consolidating application to resolve some planning issues which will provide an opportunity to develop a new restoration plan which will be biodiversity led (however large open water body will be the final land use).
National Designations (SSSI, SAC, SPAs, RAMSARs and NPs) within 500m	None
Resource Requirements- comment on cost if appropriate	Restoration budget is available to pay for restoration land forming and vegetation establishment, however volunteers will be used where possible to carry out surveys.
Contribution to biodiversity	Improvements to quarry restoration design will allow better integration of the site within the surrounding area and associated habitats.
Partners and Local initiatives	None known
Other documents supporting the site BAP	ROMP application Environmental Statement and approved restoration scheme.

Site Layout



Item No.	Objective	Biodiversity Feature	Targets	Tasks	Assessing Indicator	Responsible Person	Timescale (Completion)
1	Carry out ecological surveys	All species associated with the Quarry	Conduct surveys associated with consolidating planning application	<p>1. Assist Land and Mineral Planning Managers with ecological surveys where appropriate</p> <p>2. Interpret results and incorporate suitable habitats in to restoration aftercare</p>	<p>Surveys commenced and results interpreted</p> <p>Increase in species and numbers</p>	Landscape Architect	<p>Surveys carried out in 2013 (Complete)</p> <p>Ongoing</p>
2	To develop an appropriate restoration scheme for the quarry	Wood pasture and parkland, Upland heathland, Oligotrophic lakes, Rock outcrop and scree habitats, Open mosaic habitats on previously developed land and their associated species	To draw up a restoration scheme with a biodiversity focus following completion of Target 1	1. Complete restoration plan either in house or in conjunction with external consultants	Restoration plan approved	Landscape Architect	Completed 2015
3	To increase the extent of heathland/ grassland habitats	Upland heathland and acid grassland	Establish trial plots on interim screening and restoration areas	<p>1. Draw up methodology for substrate and seeding trial plots</p> <p>2. Monitor and review results</p>	<p>Trial plots established.</p> <p>Appropriate bench restoration methods established</p>	Quarry Manager	<p>Trial plots established by Q4 2020</p> <p>Ongoing</p>