

Pottal Pool

Site Biodiversity Action Plan



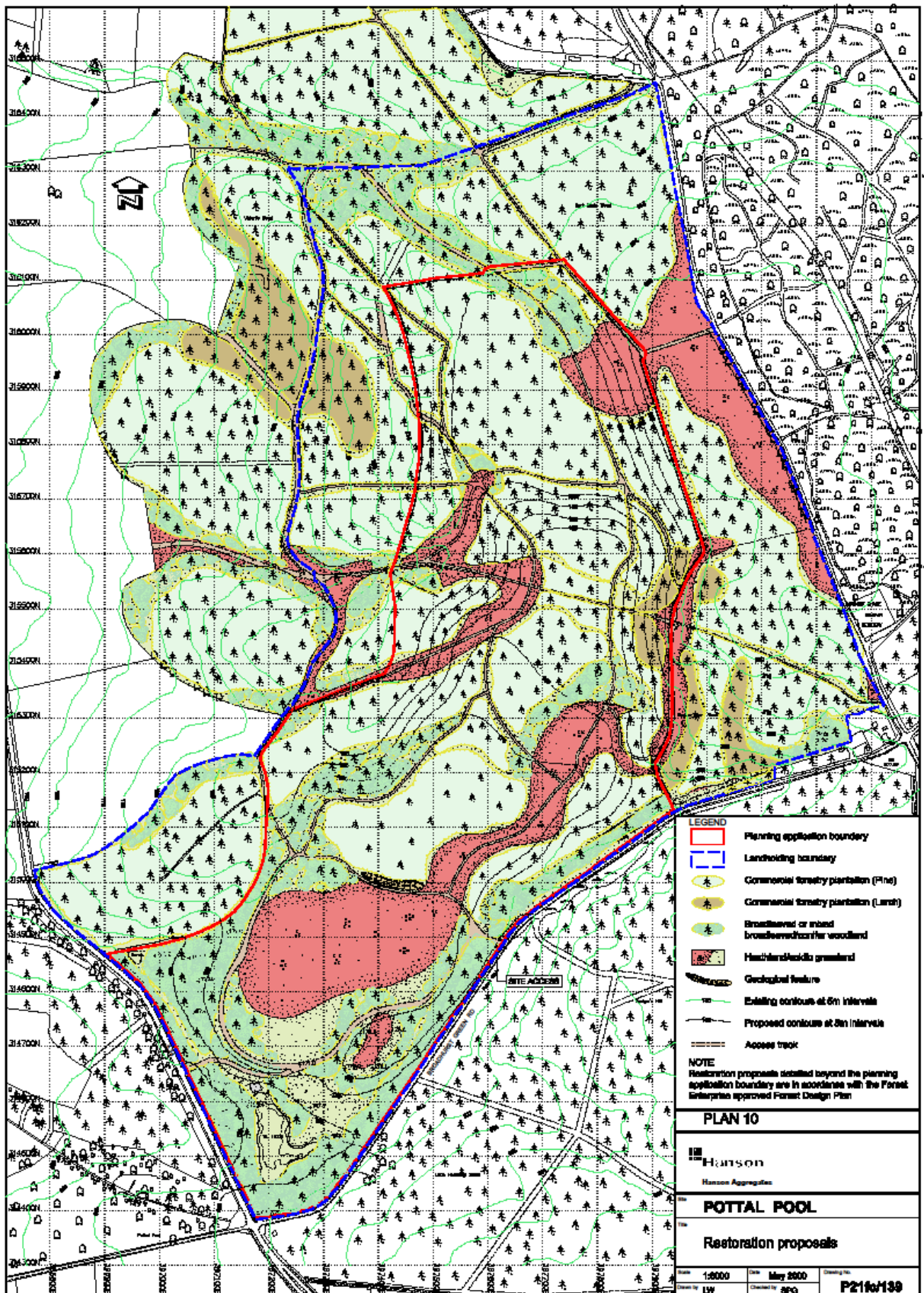
Prepared: 2006

Updated: 2017

Site Information- Pottal Pool

Site Name and Location (incl. Grid Ref.)	Pottal Pool Quarry, Cannock Chase, Staffs (SJ 976 149)
Hanson Company	HANSON AGGREGATES – CENTRAL
BAP(s) that will be targeted	National BAP Staffordshire BAP
Habitat(s) to be developed	Lowland Heathland Acid Grassland
BAP species to be encouraged	Badger Nightjar Bat
Designated Natural Area	Midlands Plateau
Background and site description	Pottal Pool Quarry comprises 86 hectares of land within Cannock Chase AONB, Staffordshire. The quarry has been operating since the 1940's, with extraction of sand and gravel of the Sherwood Triassic group, progressing in a generally northern direction from the sites origins close to Pottal Pool cross-roads. Planning permission for a 31.5 hectares extension was gained in 2001, which included formalising the restoration of the entire site. The site is being restored to a mixture of coniferous and broadleaved forestry plantations, as currently exists, and significant areas of lowland heath and acidic grassland. The Cannock Chase SSSI is approximately 200 metres to the east of the site boundary.
National Designations (SSSI, SAC, SPAs, RAMSARs and NPs) within 500m	Cannock Chase AONB http://www.naturalengland.org.uk/ourwork/conservation/designations/aonb/cannock.aspx Cannock Chase – SSSI 1054241 http://www.sssi.naturalengland.org.uk/special/sssi/unit_details.cfm?situnt_id=1014942 Cannock Chase – SSSI 1002228 Jaclyn Lake http://jncc.defra.gov.uk/protectedsites/sacselection/sac.asp?euocode=UK0030107 Cannock Chase SAC - UK0030107 http://jncc.defra.gov.uk/protectedsites/sacselection/sac.asp?euocode=UK0030107 German Military cemetery – Registered Park and Garden 1001674 http://www.magic.gov.uk/Metadata_for_magic/rpg/5269.pdf
Resource Requirements-comment on cost if appropriate	Pre-stripping ecological surveys and on-going monitoring of the site are a requirement of existing planning conditions. Protection of existing habitats is a legislative requirement. Creation of new lowland heath and acidic grassland is part of the approved restoration scheme. Protection of the maternity bat roost is an on-going legislative requirement.
Contribution to biodiversity	Increasing the area of lowland heathland is both a local and national BAP habitat target. Increasing acid grassland is a national BAP habitat target. The creation of these and juvenile forestry plantations will hopefully encourage nesting Nightjar, which is a local and national BAP species target.
Partners and Local initiatives	Cannock Chase AONB Committee. Staffordshire Wildlife Trust.
Other documents supporting the site BAP	Full ecological report including contribution by West Midlands Bird Club as part of Environmental Statement. Pre-strip Phase 1 and Protected Species survey reports. Quarry development and restoration plans, ecological surveys/ reports, ROMP Environmental Statement, TPO designations

Site Layout



Action Plan

Item No.	Objective	Biodiversity Feature	Targets	Tasks	Assessing Indicator	Responsible Person	Timescale (Completion)
1	Restore important habitats.	Acid grassland & lowland heathland.	20 ha of grassland/heath mosaic.	In compliance with approved site restoration scheme, seed areas with acid grassland mixture and encourage heather establishment by brash-laying, seeding and direct planting of stock transplanted from strip areas and on-site "nursery beds". Control weed species broom, bracken and trees.	Successful establishment of planted species.	Landscape Architect.	Phased restoration over life of site. (Approx 2028).
2	Encourage rare species.	Nightjar.	Suitable nesting areas available annually.	Establishment of heath/acid grassland as per target 1. Careful consideration of vegetation clearance prior to stripping to allow tree felling areas to be utilised by Nightjar.	Nightjar reported on site by Hanson staff / consultant ecologist / external wildlife group (eg West Midlands Bird Club).	Landscape Architect, Site Manager.	Every year for life of site.
3	Protect species.	Badger, Pipistrelle Bat, Brown Long-eared Bat.	Prevent disturbance to existing site populations.	Protect existing known nesting areas, Ref Cond's 38-Badger/Reptile pre-strip surveys, 39-ecology/bird pre-strip surveys& 40 [Bungalow bat-roost] and limit disturbance on site by making staff aware of habitat areas.	Species monitoring reports bi-annually. Site Manager to inform staff and contractors working close to habitat areas.	Landscape Architect, Site Manager.	Every two years for life of site.